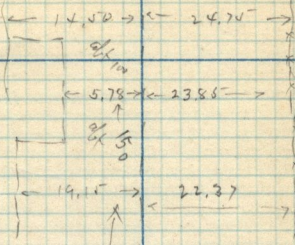


Montpelier Idaho, May 28 - 1902.

80.33

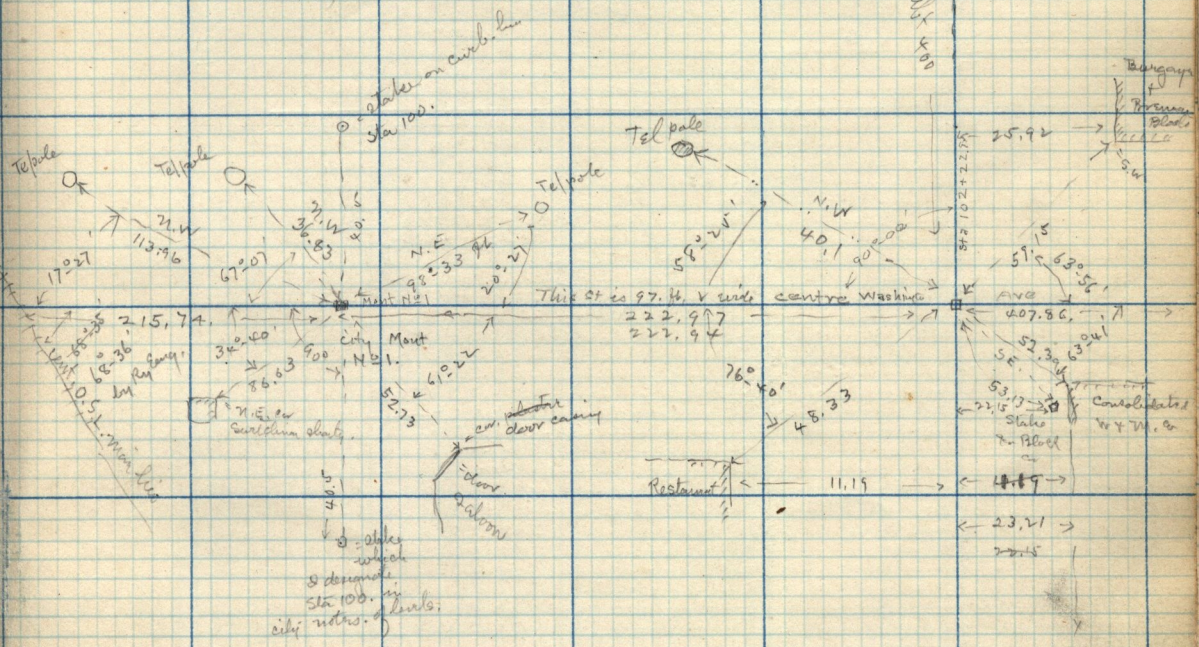
10.86
3.7
14.56

11th Street



6' x 50

Orange
P. B. Brown
Blacks
11th St



slates which I demand. See 100. on city notes.

Resturant

door saloon

door casing

Consolidated W & M. Co

Stake 1902

407.86

This St is 97. ft. & ends centre Washington

22.97

22.94

City Montpelier

Tel pole

Tel pole

58.22 ft

N.W. 40.1

N.E. 98.33 ft

Tel pole

Tel pole

Tel pole

10.51

25.92

51.5

52.30

53.10

21.15

23.21

22.5

22.43

17.27

113.16

67.07

32.83

15

20.21

58.22 ft

40.1

98.33 ft

25.92

51.5

52.30

53.10

21.15

23.21

22.5

22.43